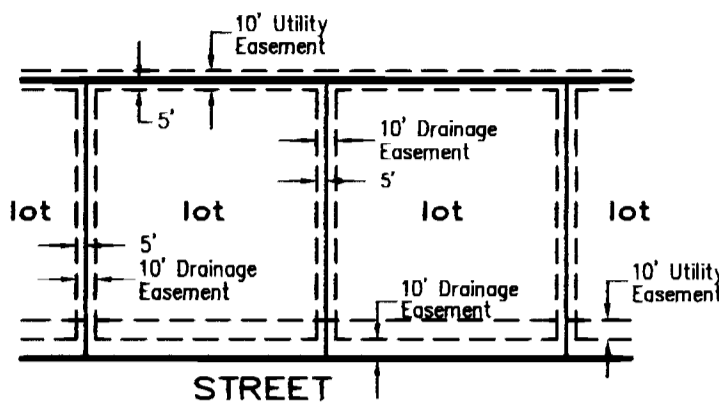


NOTES:

- Selling a portion of this addition by metes and bounds is a violation of City ordinance and state law and is subject to fines and withholding of utilities and building permits.
- All corners are 1/2 inch iron rods with orange plastic caps stamped "SPIARSENG RLPS 5610" unless otherwise noted.
- Lot 1 and Lot 2, Block Z, and Lot 1, Block X to be conveyed to and maintained by the Seis Lagos Community Service Association.
- The Purpose of this Replat is to Realign Castillo Trail



Note: Except as shown all lots have a 5' Drainage Easement along all side and Rear lot line, a 10' Drainage Easement along the Front of all lots and a 10' Utility Easement adjacent to 10' Drainage Easement.

Typical Utility & Drainage Easement

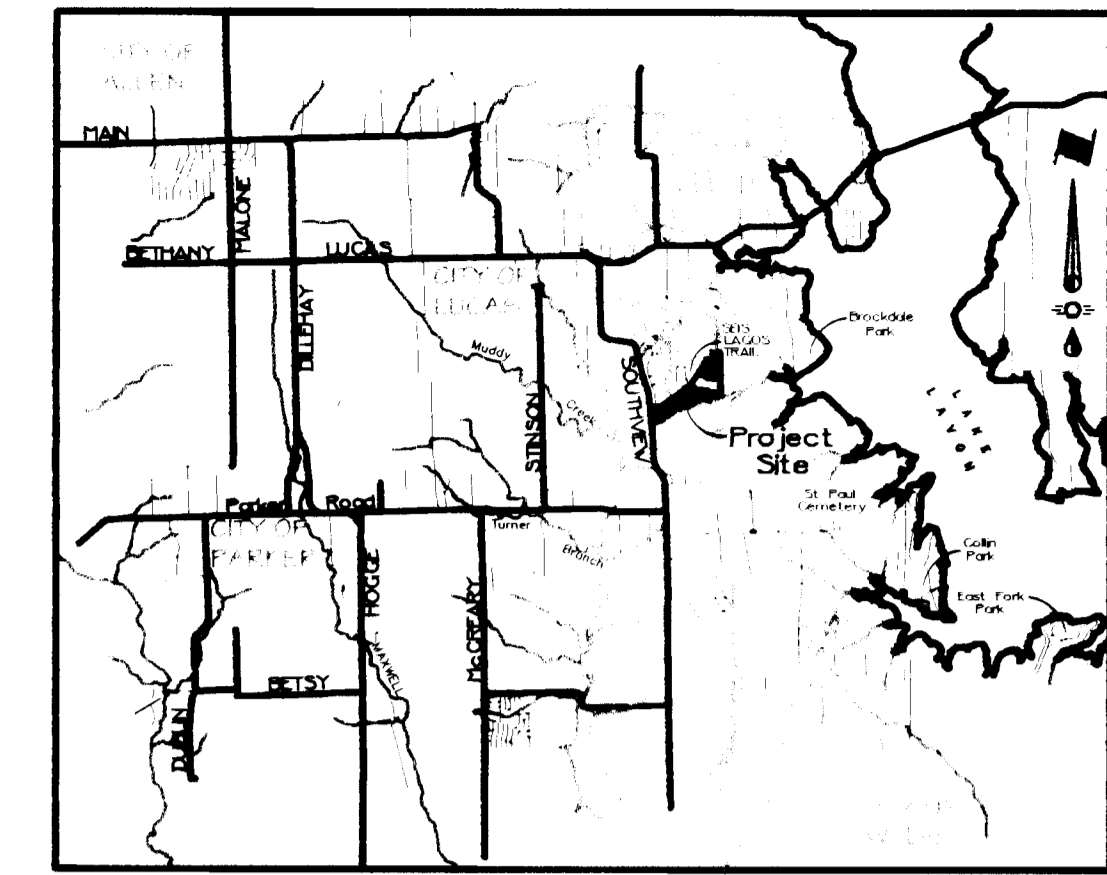
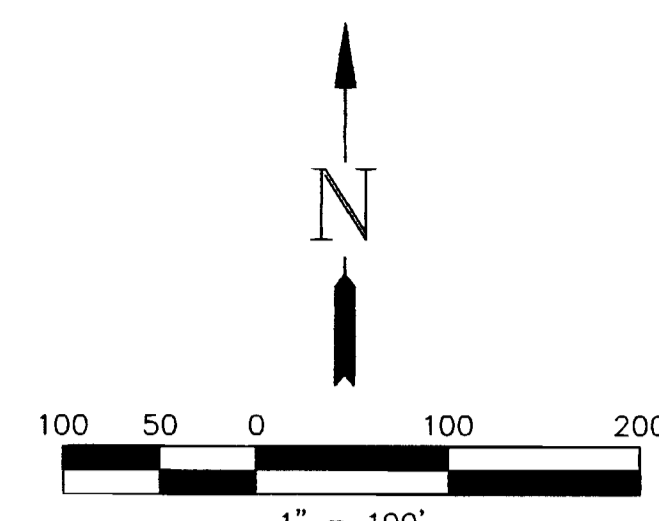
Legend

- IPF: Iron Rod Found w/Cap
- IP.S: Iron Rod Set w/Cap
- W.M.E: Wall Maintenance Easement
- B.L: Building Line Setback
- R.O.W: Right of Way
- S.S.E: Sanitary Sewer Easement
- D.E: Drainage Easement
- F.A.E: Farmers Electric And CoServ Utility Easement
- H.O.A: Home Owners Association
- S.N.C: Street Name Change
- P.F.H: Proposed Fire Hydrant

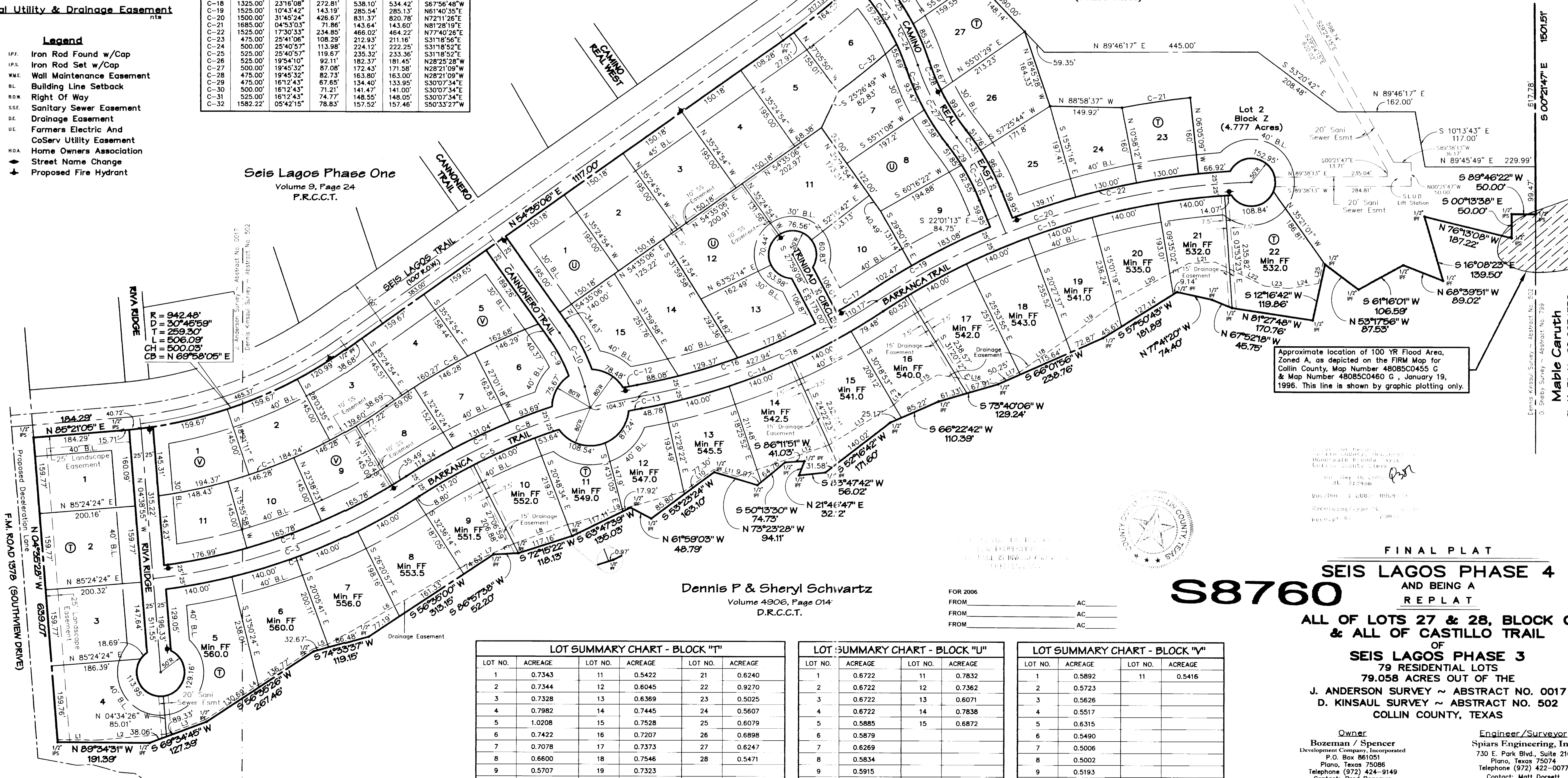
CURVE	RADIUS	DELTA	TANGENT	LENGTH	CHORD	BEARING
C-1	1087.48'	27'18"09"	264.12'	518.19'	513.31'	S68°14'10"W
C-2	1232.48'	25'17"32"	276.53'	544.05'	539.65'	S69°38'58"W
C-3	1257.48'	26'29"35"	296.02'	581.44'	576.28'	S70°14'59"W
C-4	1282.48'	25'24'41"	289.15'	568.80'	564.14'	N69°42'32"E
C-5	1275.00'	14'35'52"	163.31'	324.84'	323.97'	N64°18'08"E
C-6	1470.00'	14'05'43"	181.74'	361.63'	360.73'	N61°37'58"E
C-7	1325.00'	14'39'44"	170.47'	339.07'	338.15'	N64°20'04"E
C-8	1300.00'	22'34'40"	259.50'	512.26'	508.97'	N68°17'32"E
C-9	325.00'	15'05'38"	43.06'	85.62'	85.37'	S27°52'05"E
C-10	350.00'	20'23'55"	62.97'	124.61'	123.95'	S25°12'57"E
C-11	375.00'	15'40'04"	51.59'	102.55'	102.23'	S27°34'52"E
C-12	1325.00'	01'16'46"	14.79'	29.59'	29.59'	N78°58'29"E
C-13	1275.00'	01'12'54"	13.52'	27.04'	27.04'	N78°58'25"E
C-14	1350.00'	23'16'08"	277.96'	548.26'	544.50'	N67°56'48"E
C-15	1475.00'	30'05'19"	396.43'	774.59'	765.72'	N71°21'23"E
C-16	1300.00'	17'25'16"	199.17'	395.27'	393.75'	S70°52'14"W
C-17	1300.00'	03'38'37"	41.35'	82.67'	82.66'	S58°08'02"W
C-18	1325.00'	23'16'08"	272.81'	538.10'	534.42'	S67°56'48"W
C-19	1525.00'	10'43'42"	143.19'	285.54'	285.13'	N61°40'35"E
C-20	1500.00'	31'45'24"	428.67'	831.37'	820.78'	N72°11'26"E
C-21	1685.00'	04'53'03"	71.86'	143.64'	143.60'	N81°28'19"E
C-22	1525.00'	17'30'33"	234.85'	466.02'	464.22'	N77°40'26"E
C-23	475.00'	25'41'06"	108.29'	212.93'	211.16'	S31°18'56"E
C-24	500.00'	25'40'57"	113.98'	224.12'	222.25'	S31°18'52"E
C-25	525.00'	25'40'57"	119.67'	235.32'	233.36'	S31°18'52"E
C-26	525.00'	19'54'10"	92.11'	182.37'	181.45'	N28°25'28"W
C-27	500.00'	19'45'32"	87.08'	172.43'	171.58'	N28°21'09"W
C-28	475.00'	19'45'32"	82.73'	163.80'	163.00'	N28°21'09"W
C-29	475.00'	16'12'43"	67.65'	134.40'	133.95'	S30°07'34"E
C-30	500.00'	16'12'43"	71.21'	141.47'	141.00'	S30°07'34"E
C-31	525.00'	16'12'43"	74.77'	148.55'	148.05'	S30°07'34"E
C-32	1582.22'	05'42'15"	78.83'	157.52'	157.46'	S50°33'27"W

LINE	LENGTH	BEARING
L1	84.49	N89°34'31"W
L2	143.11	N84°55'23"E
L3	87.34	S69°34'45"W
L4	267.68	S56°35'26"W
L5	32.99	S72°52'40"W
L6	320.10	N59°46'25"E
L7	123.38	S65°35'24"W
L8	119.42	S70°12'48"W
L9	251.77	S74°01'25"W
L10	77.56	S53°23'24"W
L11	50.55	N73°23'28"W
L12	203.60	S70°53'00"W
L13	159.51	N58°12'50"E
L14	33.96	N45°10'28"E
L15	77.74	S59°41'07"W
L16	118.85	S81°14'14"E
L17	57.86	S66°01'56"W
L18	119.91	N54°40'58"E
L19	127.32	N53°16'01"E
L20	173.20	N61°17'07"E
L21	56.43	N86°56'47"E
L22	114.87	S64°23'47"E
L23	49.67	S84°17'43"E
L24	63.84	N80°22'29"E
L25	46.35	S12°16'42"W

R = 1427.22'
D = 19°22'(0°)
T = 243.53'
L = 482.42'
CB = 480.12'
CB = N 44°54'06" E



LOCATION MAP
Not To Scale



Seis Lagos Phase One
Volume 9, Page 24
P.R.C.C.T.

Dennis P & Sheryl Schwartz
Volume 4906, Page 014
D.R.C.C.T.

S8760

**FINAL PLAT
SEIS LAGOS PHASE 4
AND BEING A
REPLAT**

ALL OF LOTS 27 & 28, BLOCK O
& ALL OF CASTILLO TRAIL
OF
SEIS LAGOS PHASE 3
79.058 ACRES OUT OF THE
J. ANDERSON SURVEY ~ ABSTRACT NO. 0017
D. KINSAUL SURVEY ~ ABSTRACT NO. 502
COLLIN COUNTY, TEXAS

LOT SUMMARY CHART - BLOCK "I"			
LOT NO.	ACREAGE	LOT NO.	ACREAGE
1	0.7343	11	0.5422
2	0.7344	12	0.6045
3	0.7328	13	0.6369
4	0.7982	14	0.7445
5	1.0208	15	0.7528
6	0.7422	16	0.7207
7	0.7078	17	0.7373
8	0.6600	18	0.7546
9	0.5707	19	0.7323
10	0.6308	20	0.6427
21	0.6240	22	0.9270
23	0.5025	24	0.5607
25	0.6079	26	0.6898
27	0.6247	28	0.5471

LOT SUMMARY CHART - BLOCK "U"			
LOT NO.	ACREAGE	LOT NO.	ACREAGE
1	0.6722	11	0.7832
2	0.6722	12	0.7362
3	0.6722	13	0.6071
4	0.6722	14	0.7838
5	0.5885	15	0.6872
6	0.5879		
7	0.6269		
8	0.5834		
9	0.5915		
10	0.6572		

LOT SUMMARY CHART - BLOCK "V"			
LOT NO.	ACREAGE	LOT NO.	ACREAGE
1	0.5892	11	0.5416
2	0.5723		
3	0.5626		
4	0.5517		
5	0.6315		
6	0.5490		
7	0.5006		
8	0.5002		
9	0.5193		
10	0.5193		

Owner: Bozeman / Spencer Development Company, Incorporated
P.O. Box 861051
Plano, Texas 75086
Telephone (972) 424-9149
Contact: Brad Bozeman

Engineer/Surveyor: Spiars Engineering, Inc.
730 E. Park Blvd., Suite 210
Plano, Texas 75074
Telephone (972) 422-0077
Contact: Matt Dorsett

8760