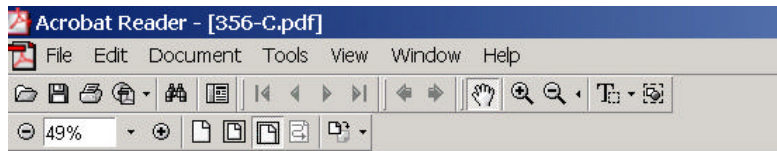





# Viewing Maps

Map facets are in .PDF format which are viewed with Adobe Acrobat Reader. To use all print capabilities, at least version 5.0 must be installed.





To upgrade, follow link- [Http://www.adobe.com/acrobat](http://www.adobe.com/acrobat)

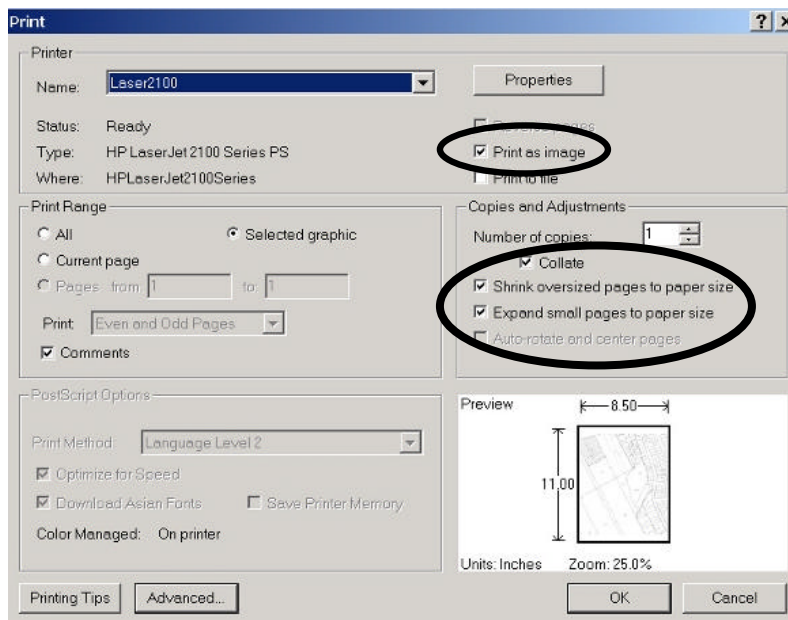


-  Pan button
-  Zoom In button
-  Zoom Out button

## To print:

Maps are 24" x 36", so unless you have a full size printer, you can only print a portion of the map.

-  Graphics Select Tool (box area on map you want to print)
-  Print button



Make sure the items above are checked. Then press OK to print.